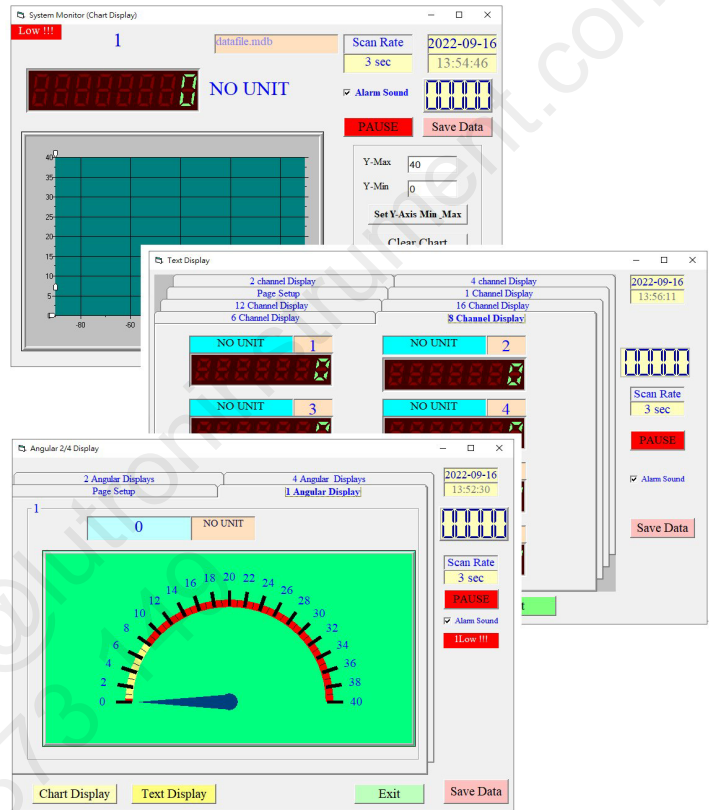


**Multi-Displays**

**DATA ACQUISITION SOFTWARE**

**Model : SW-E816**

**ISO-9001, CE, IEC1010**



**FEATURES**

The SW-E816 is a multi-displays ( 1/2/4/6/8/16 displays ) powerful WINDOWS program available for XP, Win 7, Win 10, Win 11 which enables you to cooperate the LUTRON's instruments. It also provides the functions of data logging system, text display, angular display, chart display, data recorder high/low limit, data query, text report, chart report.. .xxx.xlsx,xxx.xls,xxx.txt data file can be retrieved for EXCELL, ACCESS.., wide intelligent applications.



**LUTRON ELECTRONIC**

*The Art of Measurement*

# MULTI-DISPLAYS DATA ACQUISITION SOFTWARE

## Model : SW-E816

### INTRODUCTION

The SW-E816 is a multi-displays ( 1/2/4/6/8/16 displays ) powerful WINDOWS program available for XP, WIN8, WIN10 which enables you to cooperate the LUTRON's instruments. It also provides the functions of data logging system, text display, angular display, chart display, data recorder high/low limit, data query, text report, chart report.. .xxx.mdb data file can be retrieved for EXCELL, ACESS., wide intelligent applications.

1. The saved xxx.mdb data file can be retrieved for EXCELL, ACESS...
2. When execute the " Print data " function, will generate the xxx.txt file.

### GENERAL SPECIFICATIONS

System Requirement	Computer with following operating system : XP Win 7 Win 10, Win 11 Win 7 32bit or 64bit
Function	Data recorder, text display, analog display, chart display, high/low limit, data query, text report, chart report.
Common Port	Select COM 1 to COM 255.
Display select	1/2/4/6/8/16 displays,
Data Record	Auto or Manual
Sample Rate	1 to 3,600 seconds.
Data Save Structure	Data file : XXX.xlsx or XXX.xlsx * Automatic save to disk. Data file : XXX.txt. * When execute the " Print data " function, will generate the xxx.text file.
Accessories Included	CD disk..... 1 PC. Operation manual..... 1 PC.
Optional Cables	RS232 cable, Model : UPCB-01 Direct RS232 cable be used to connect the meter to the computer ( COM port ). RS232 cable, Model : UPCB-02 Isolated RS232 cable be used to connect the meter to the computer ( COM port ). USB cable, Model : USB-01 USB interface cable be used to connect the meter to the computer ( USB port ). RS232 cable, Model : UPCB-04 * UPCB-04 is the double D9 RS232 cable. * Available for FG-5000A-232, FG-20KG-232.